

# CONTEMPORARY FIVE-PLEX IN CENTRAL ALAMEDA

Asking Price: ~~\$1,800,000~~

2164 San Jose Avenue, Alameda, CA 94501

**\$1,695,000**



This large, approximately 5,843 square foot, contemporary five-plex is located on a 7,500 square foot lot with a 50' street frontage on San Jose Avenue.

2164 San Jose Avenue features one (1) 3-bedroom, 1-1/2 bathroom townhouse-style unit, one (1) 2-bedroom, 1-1/2 bathroom townhouse-style unit with a fireplace, two (2) 2-bedroom, 1-1/2 bathroom townhouse-style units and one (1) single-level 2-bedroom, 1-bathroom unit, for a total of five (5) units. Additionally, there is a paved parking lot in the rear with five (5) covered carports.

Residents at 2164 San Jose Avenue pay for their own electric service. Owner pays for water, sewer, and garbage. The property is also served by a house electric meter and a house gas meter that serves the common hot water heater, one (1) washer and one (1) dryer in the utility room and common area laundry room. The house gas meter also serves the hydronic heating system that supplies heat to all the units. All units are equipped with a garbage disposal and a built-in dishwasher. Property is Sewer Lateral Compliant.

A quick stroll away is Alameda's ever-popular Park Street, which is known for its unique shops, a wide variety of restaurants, and the historic Alameda Theatre. 2164 San Jose Avenue also offers easy access to local and Transbay AC Transit bus line, schools, and shopping at the South Shore Shopping Center.

[Floor Plan on the reverse side](#)  
[www.Panavista.com/2164SanJose](http://www.Panavista.com/2164SanJose)

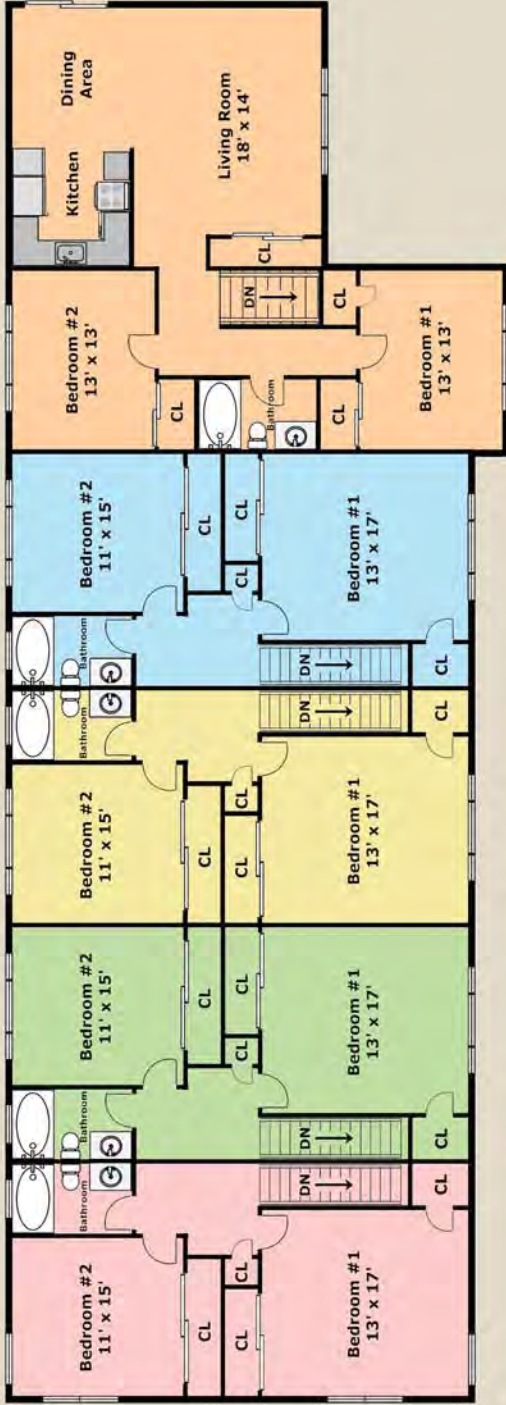
Broker-of-Record: Ramesh  
Ramesh@Panavista.com  
DRE 00870283



(510) 523-0707  
**PANAVISTA REALTY**  
2503 Lincoln Avenue, Alameda



**FLOOR PLAN FOR 2164 SAN JOSE AVENUE, ALAMEDA**



**Upper Level**



**Lower Level**

Layout and all measurements are approximate,  
and not guaranteed to be either exact or to scale.