

CONTEMPORARY FIVE-PLEX IN CENTRAL ALAMEDA

Asking Price: \$1,950,000

2136 San Antonio Avenue, Alameda, CA 94501



This large, approximately 4,513 square foot, contemporary five-plex is located on a 7,500 square foot lot with a 50' street frontage on San Antonio Avenue.

2136 San Antonio Avenue features one (1) 3-bedroom, 1-1/2 bathroom townhouse-style unit in the rear and four (4) 3-bedroom, 1-bathroom units in the front, for a total of five (5) units. Additionally, there is a good-sized paved backyard with five (5) covered carports equipped with storage shelves for tenants' personal belongings.

Residents at 2136 San Antonio Avenue pay for their own gas and electric service. Owner pays for water, sewer, and garbage. The property is also served by a house electric meter and house gas meter that serves the common hot water heater, two (2) washers and two (2) stacked dryers in the utility room and common area laundry room. All units are equipped with garbage disposals, whereas 4 of the 5 units are equipped with built-in dishwashers and built-in microwaves. Property is Sewer Lateral Compliant.

A quick stroll away is Alameda's ever-popular Park Street, which is known for its unique shops, a wide variety of restaurants, and the historic Alameda Theatre. 2136 San Antonio Avenue also offers easy access to local and Transbay AC Transit bus line, schools, and shopping at the South Shore Shopping Center.

Floor Plan on the reverse side

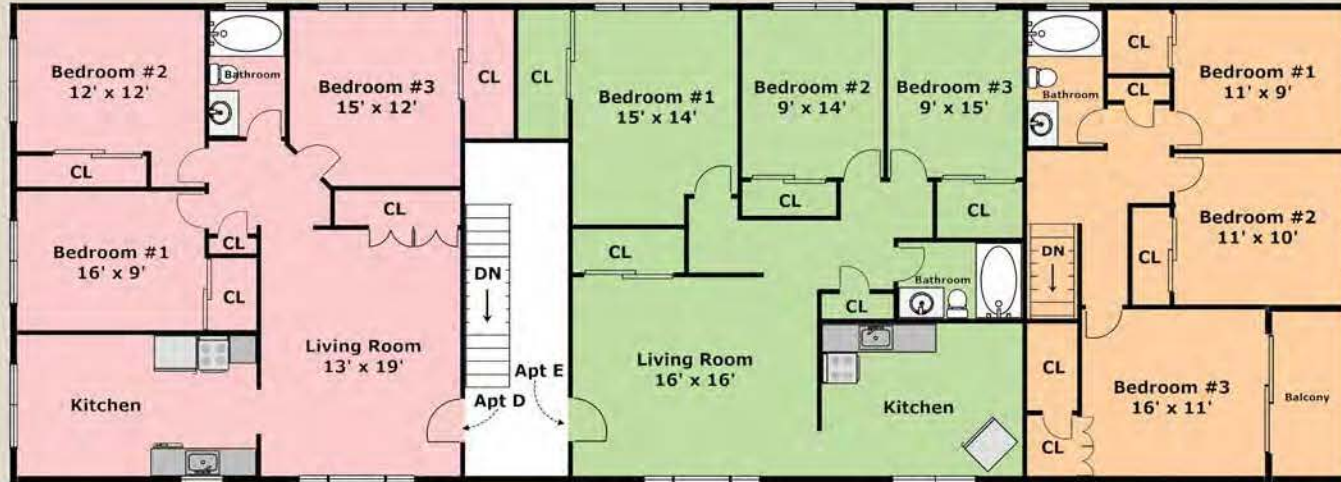
www.Panavista.com/2136SanAntonio

Broker-of-Record: Ramesh
Ramesh@Panavista.com
DRE 00870283

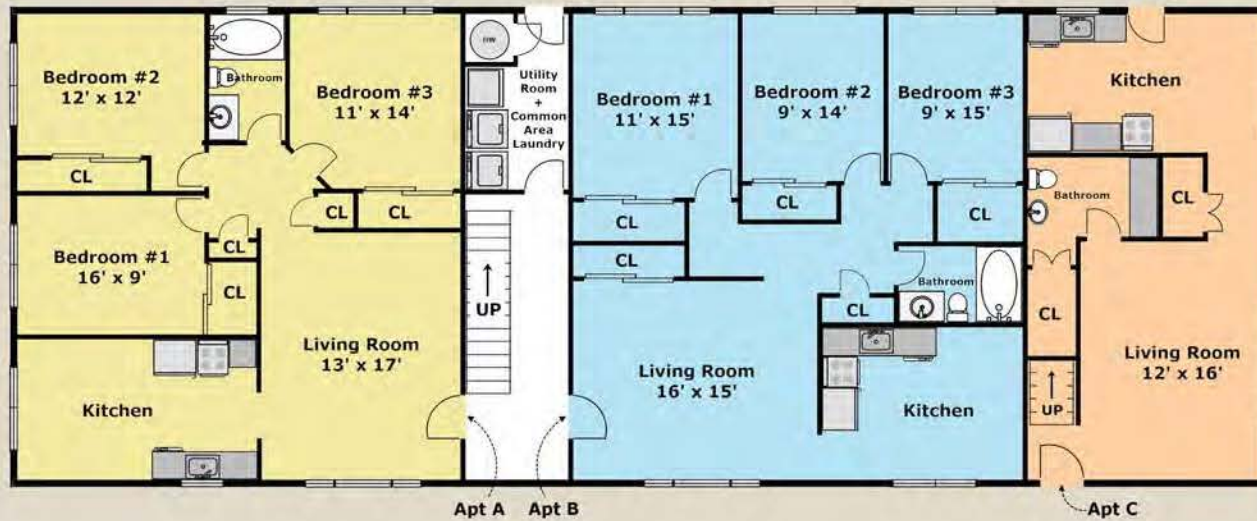


(510) 523-0707
PANAVISTA REALTY
2503 Lincoln Avenue, Alameda

FLOOR PLAN FOR 2136 SAN ANTONIO AVENUE, ALAMEDA



Upper Level



Lower Level

Layout and all measurements are approximate,
and not guaranteed to be either exact or to scale.